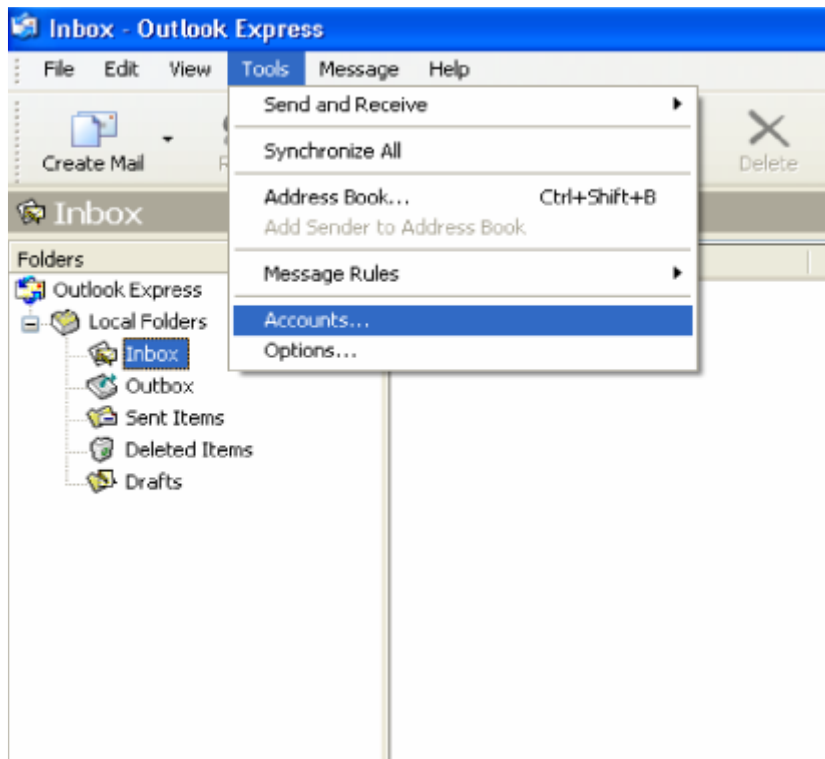


Setting up your E-Mail

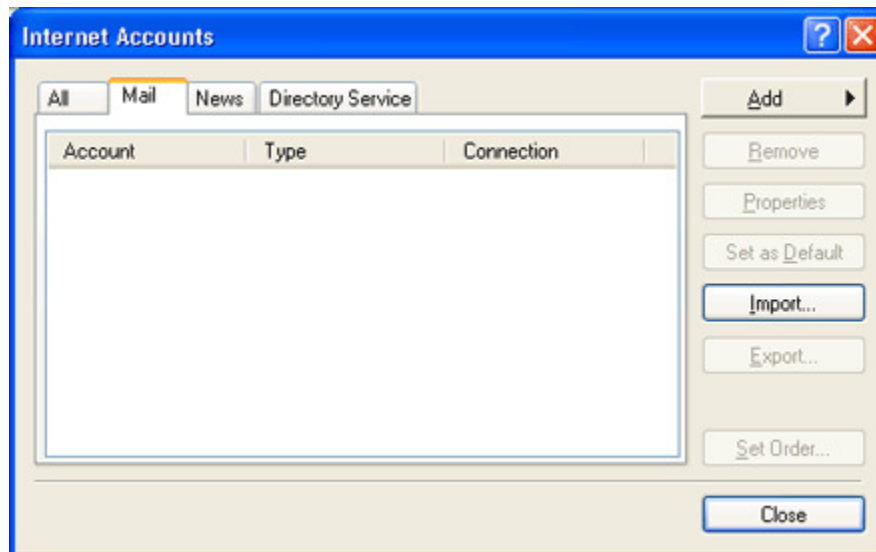
This guide will take you through setting up Outlook Express to collect and read your email. Other mail clients are available and the settings provided here can be applied to the mail client of your choice. For this guide you will need the following information:

- Your **Seriously Internet** email address
- Your **Seriously Internet** email password

1. Open **Outlook Express**. On the toolbar click on **Tools** and then **Accounts** as shown below.



2. Select **Add** and then **Mail**.

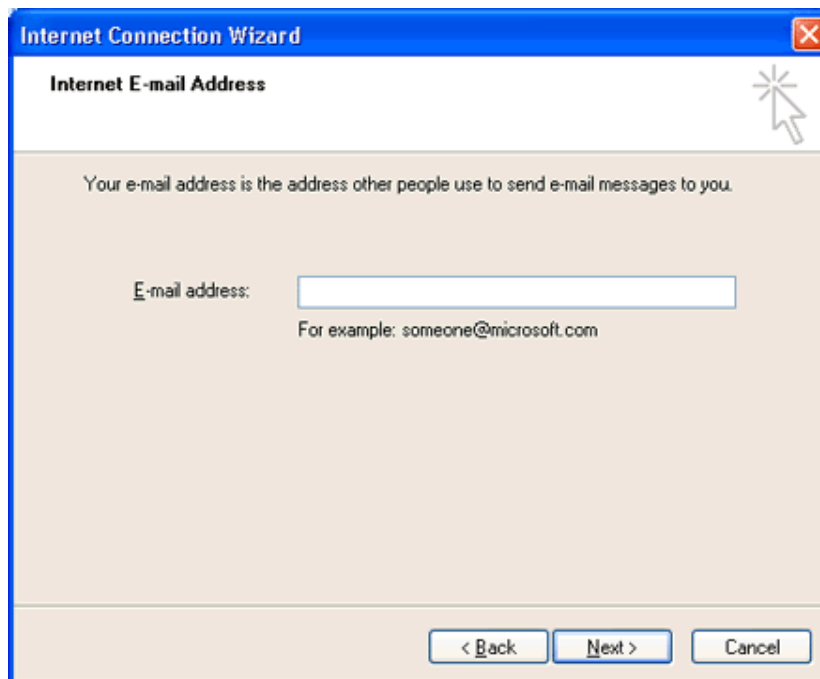


3. You'll then be asked to enter a name. This can be your name or a company name. Then click **Next**.

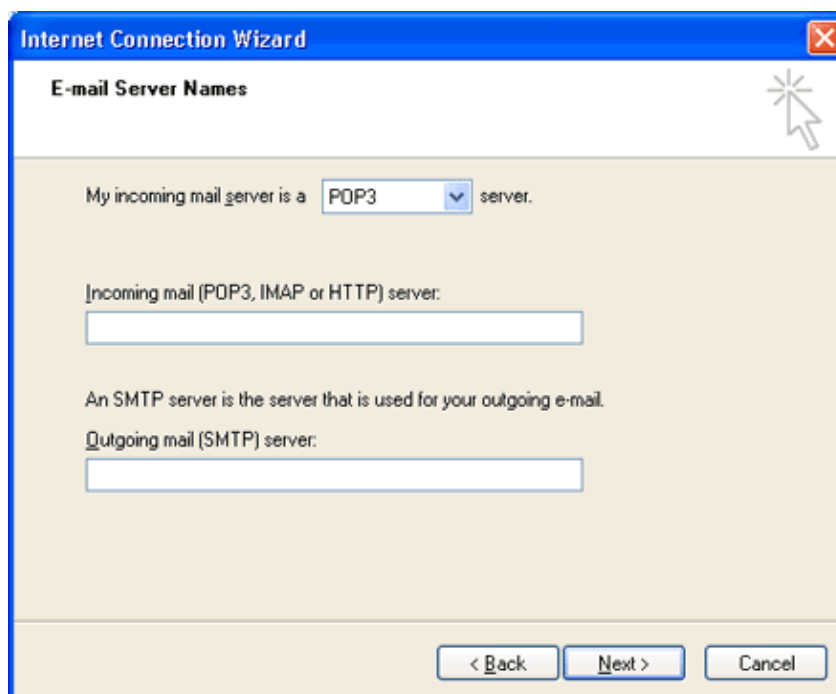




4. Now add your **Seriously Internet** email address and click **Next**.



5. You'll now be asked to supply details of your incoming and outgoing email servers. Your incoming email server must be set as **POP3**.





6. You'll then need to state your incoming and outgoing email servers. Complete these email settings as follows:

Server Information:

Incoming mail server (POP3) is **pop.seriouslyinternet.com**

Outgoing mail server (SMTP) is **smtp.seriouslyinternet.com**

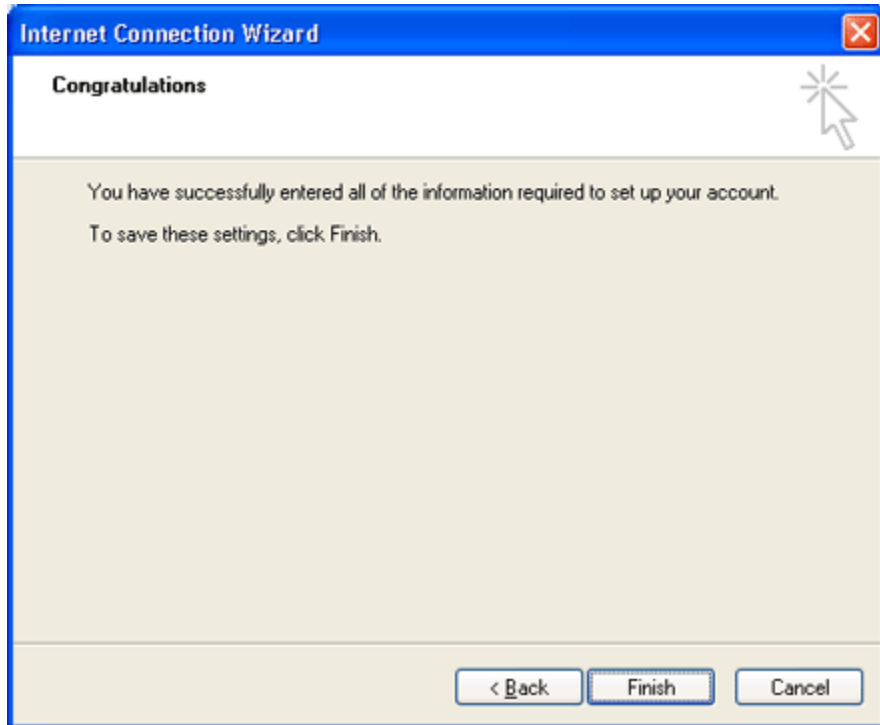
Fill the **Account name** field with your account username. Fill the Password field with the password that you selected during signup. (You will not be able to see it as you type, it will be replaced by stars).

7. Click on **Next** and you will be taken to the Mail Logon Screen. Enter your **Seriously Internet** username and password. Note that Secure Password Authentication should not be ticked. Click **Next**.

The screenshot shows a window titled "Internet Connection Wizard" with a sub-header "Internet Mail Logon". The window contains the following elements:

- A title bar with a close button (X) in the top right corner.
- A mouse cursor pointing to a star icon in the top right corner of the main content area.
- Instructional text: "Type the account name and password your Internet service provider has given you."
- An "Account name:" label followed by a text input field.
- A "Password:" label followed by a text input field.
- A checked checkbox labeled "Remember password".
- Instructional text: "If your Internet service provider requires you to use Secure Password Authentication (SPA) to access your mail account, select the 'Log On Using Secure Password Authentication (SPA)' check box."
- An unchecked checkbox labeled "Log on using Secure Password Authentication (SPA)".
- Navigation buttons at the bottom: "< Back", "Next >", and "Cancel".

8. The congratulations screen will now appear. Click on **Finish** to complete setup.



9. You're now ready to send and collect your email.